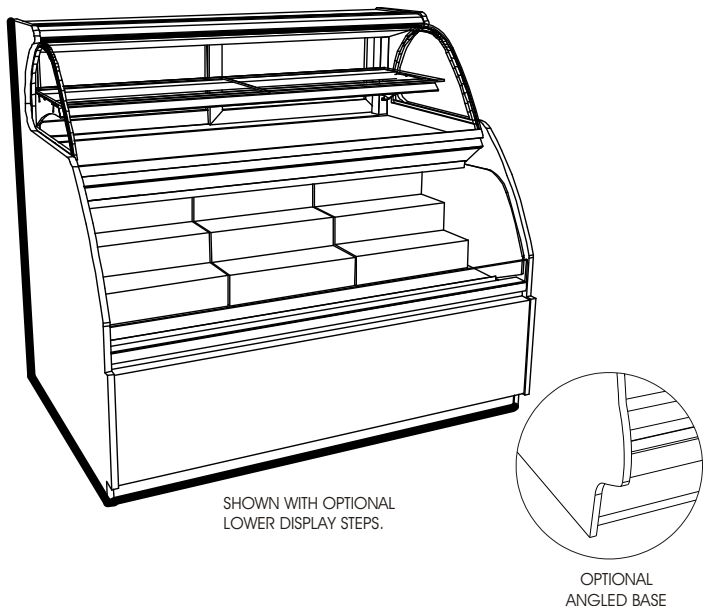


### Combination Non-Refrigerated Service Above Refrigerated Self-Service Case



- HUDLR3852 40"L x 42"D x 52 5/8"H
- HUDLR4852 50"L x 42"D x 52 5/8"H
- HUDLR5652 58"L x 42"D x 52 5/8"H
- HUDLR7452 76"L x 42"D x 52 5/8"H

#### STANDARD FEATURES

- Electric condensate evaporator pan with all self-contained refrigeration packages.
- Compressor air intake through rear & out front panel. Front panel cannot be blocked.
- One T-8 top light with protective coating in service & self-service display areas.
- One year parts & labor; one to five year compressor warranty.
- Breeze™ refrigeration system.
- Integrated average product temperature of 41°F or less.
- Upper display ambient.
- Shelf/shelves removable and adjustable vertically on 1" centers at 0°, 5° & 10° angles.
- Tempered lift-up front glass.

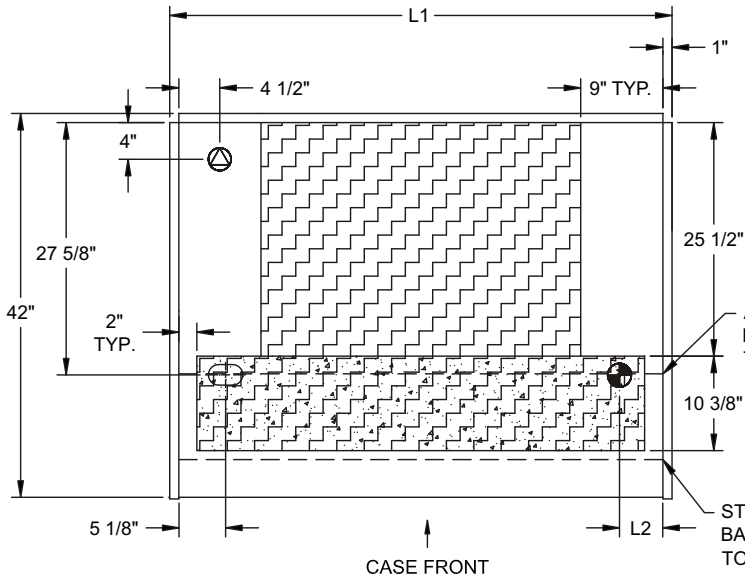
	STANDARD SPECIFICATION	OPTION(S)
LOWER DISPLAY	<input type="checkbox"/> None	<input type="checkbox"/> 2"H sheet metal steps <input type="checkbox"/> 4"H sheet metal steps <input type="checkbox"/> (1) clear glass shelf <input type="checkbox"/> (1) smoked glass shelf
UPPER DISPLAY	<input type="checkbox"/> (1) clear glass shelf	<input type="checkbox"/> (1) smoked glass shelf
INTERIOR COLOR	<input type="checkbox"/> Black	<input type="checkbox"/> White <input type="checkbox"/> Stainless Steel
TRIM COLOR	<input type="checkbox"/> Black	<input type="checkbox"/> Silver <input type="checkbox"/> Gold
EXTERIOR COLOR	<input type="checkbox"/> Wilsonart/Formica non-premium Laminate NOTE: Upper & lower rear areas white.	<input type="checkbox"/> Maple Veneer stained <input type="checkbox"/> Special paint colors <input type="checkbox"/> Standard paint colors <input type="checkbox"/> Wilsonart/Formica premium Laminate <input type="checkbox"/> Oak Veneer stained <input type="checkbox"/> Oak Veneer w/clear sealer <input type="checkbox"/> Stainless Steel
COVER/CURTAIN	<input type="checkbox"/> None	<input type="checkbox"/> Night curtain, pull-down, non-locking <input type="checkbox"/> Security cover, removable, locking
REFRIGERATION	<input type="checkbox"/> Self contained rear air intake & front discharge w/straight blade power cord (slide out)	<input type="checkbox"/> Self contained w/locking power cord <input type="checkbox"/> Remote w/electrical leads (Floor drain required)
BASE SUPPORT	<input type="checkbox"/> Levelers	<input type="checkbox"/> Casters
FRONT PANEL	<input type="checkbox"/> Flat front	<input type="checkbox"/> ABS w/angled lower (painted)
END PANEL LEFT	<input type="checkbox"/> Full w/mirror	
END PANEL RIGHT	<input type="checkbox"/> Full w/mirror	
REAR DOORS	<input type="checkbox"/> Clear glass rear sliding doors w/o lock	<input type="checkbox"/> Reflective glass rear sliding doors w/lock <input type="checkbox"/> Clear glass rear sliding doors w/lock <input type="checkbox"/> Reflective glass rear sliding doors w/o lock
REAR WRAPPING BOARD	<input type="checkbox"/> None	<input type="checkbox"/> Rear Wrapping Board
ACRYLIC TOP DISPLAY	<input type="checkbox"/> None	<input type="checkbox"/> Acrylic display w/sliding doors
FRONT GLASS	<input type="checkbox"/> Tempered (service)	<input type="checkbox"/> Non-glare
BUMPER	<input type="checkbox"/> None	<input type="checkbox"/> 1" bumper on front & customer left & right ends <input type="checkbox"/> 1" bumper on front <input type="checkbox"/> 1" bumper on front & customer left end <input type="checkbox"/> 1" bumper on front & customer right end

# ENCORE®

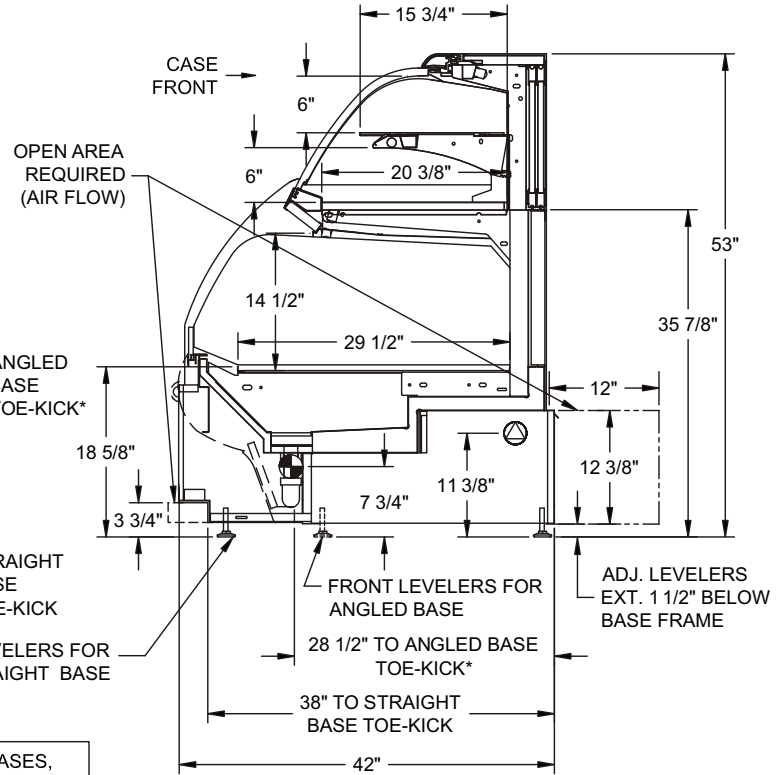
## PRODUCT SPECIFICATIONS

Intended Use of Display Area: Packaged/unpackaged refrigerated products  
 Integrated Product Temperature (IPT): 41°F  
 Intended Environment: Designed to operate in ambient conditions of 75°F / 55% relative humidity.

**PLAN VIEW**



**SIDE VIEW**



\*FOR ANGLED BASE CASES, SERVICE ACCESS AREAS END AT TOE-KICK.

NOTE: ALL DIMENSIONS APPROXIMATE

- ELECTRICAL JUNCTION BOX (SUPPLIED WITH 6" LEADS OR POWER CORD).
- LOCATION OF CONDENSATE DRAIN TUBE (SUPPLIED WITH 3/4" OR 1 1/2" PVC DRAIN TUBE).
- REFRIGERATION LINE CONNECTION.
- REMOTE CASE SERVICE ACCESS AREA.
- SELF-CONTAINED CASE SERVICE ACCESS AREA.
- DRY CASE SERVICE ACCESS AREA.

Model	Self-Contained Refrigeration/Dry					Remote Refrigeration w/Leads			Ship Wt	Frt CIs
	L1*	L2*	Volts++	Amps	NEMA Plug	Volts++	Amps***	BTUH		
HUDLR3852	40	4 3/4	120/1/60	15.8	NEMA 5-20P	120/1/60	2.48	1762	810	110
HUDLR4852	50	4 3/4	220/1/60**	13.1	NEMA 14-20P	120/1/60	2.6	2565	870	110
HUDLR5652	58	4 3/4	220/1/60**	13.2	NEMA 14-20P	120/1/60	2.7	2860	1010	110
HUDLR7452	76	4 3/4	220/1/60**	17.86	NEMA 14-30P	120/1/60	3.86	3738	1060	110

++ Operating range for 120 volt rating is 110-120 volts; operating range for 220 volt rating is 208-230 volts.

\*\* Requires 3 wires + ground

\*\*\* Does not include electric defrost on freezer models

**REGULATORY APPROVALS**

- ETL Listed Conforms to UL 471
- ETL Sanitation Conforms to NSF 7

**Important Note:**

Compressor air ventilation is out the front panel. Front panel cannot be blocked.

**Important Note:**

Units are supplied with levelers. They must be adjusted during installation to ensure the unit is level and plumb. Dimensions reflect levelers extended 1 1/4".



Note: Information is subject to change at any time.  
 888 Porter Rd. Muskegon, MI 49441 Phone: 231.798.8888 Fax: 231.798.4960 www.structuralconcepts.com